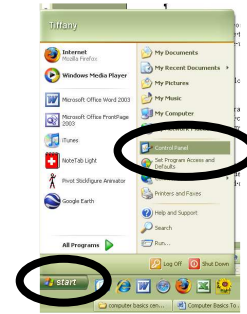
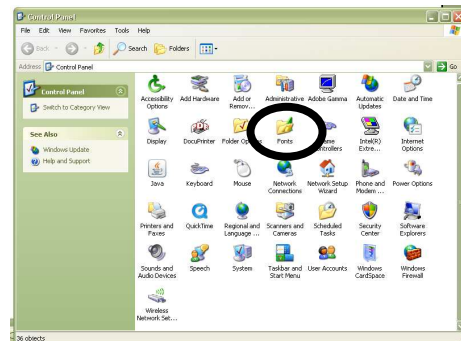


# Grade 4 Computer Basics: Installing Fonts

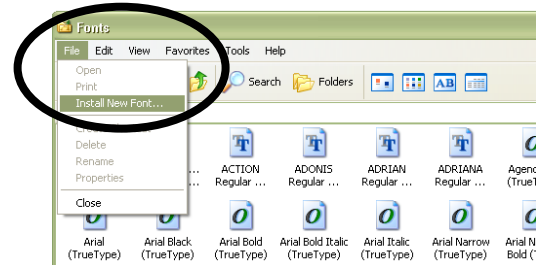
1. From the Start menu, choose “Control Panel”.



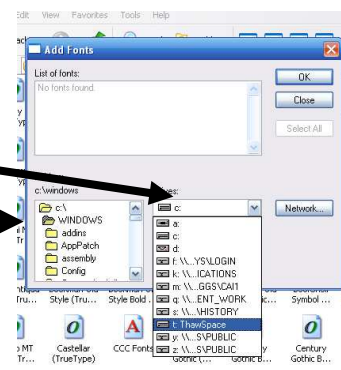
2. Double-click on “Fonts”.



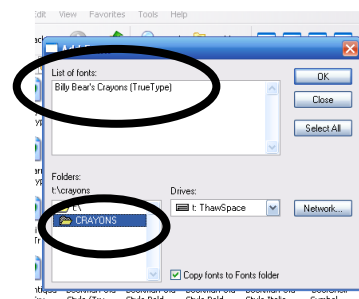
3. From the File menu, choose “Install New Fonts”.



4. Change the drive from “c:” to “t: ThawSpace”.
5. Scroll through the list of folders on the right and choose “Crayons”.



6. Click once on the “Billy Bear’s Crayons (TrueType)” then “Okay”.



You are done!